

STATE OF ARKANSAS
STATE HIGHWAY DEPARTMENT

FISCAL YEAR	JOB NO.	SHEET NO.	TOTAL SHEETS
1928	1111	1	5
PROP. BY CADRON CREEK CON. FAULKNER CO. JOB NO. 1148			

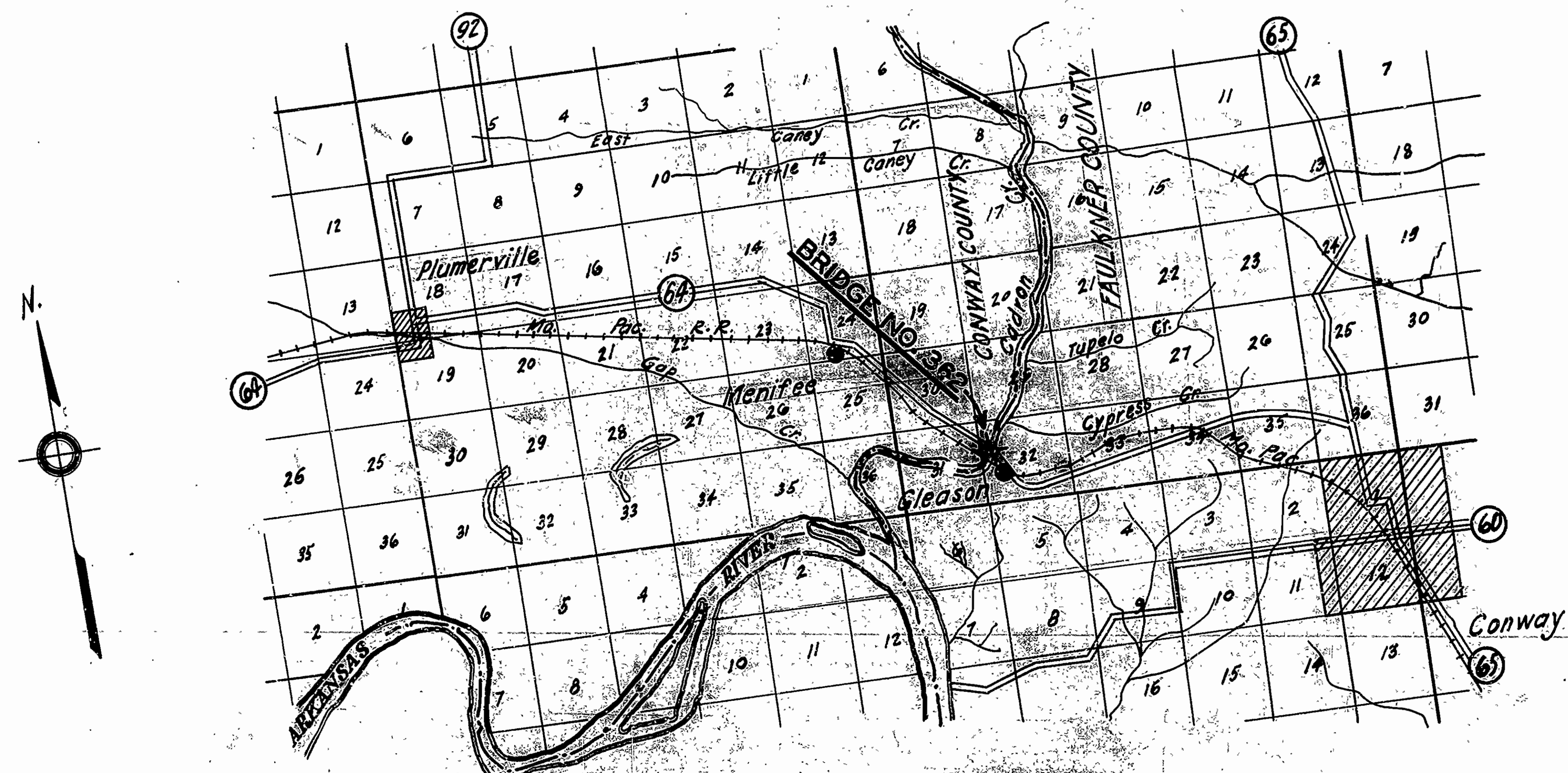
PLAN OF PROPOSED BRIDGE
OVER
CADRON CREEK
NEAR GLEASON
CONWAY & FAULKNER CO.
ROUTE 64 SEC. 7-8
JOB NO. 1111
FEDERAL AID PROJECT No.

INDEX OF SHEETS

SHEET NO.	DWG. NO.	TITLE
1	777	Title Sheet
2	778	Layout of Bridge No 352
3	779	Details of Archspan
4	780	Details of Endbents and interm. bents.
5	179	Details of 35 ft. R.C.D. Girder-Stand Superstructure.

QUANTITIES

ITEM	DESCRIPTION	QUANTITY
13	DRY EXCAVATION	321 cu yds.
13	WET EXCAVATION	2063 "
54	S.P. SOLID ROCK EXCAVATION	83 "
54	CLASS 'A' CONCRETE	409.49 "
54	CLASS 'B' CONCRETE	638.37 "
54	CLASS 'S' CONCRETE	474.14 "
55	REINFORCING STEEL	139707 Lbs.
67	UNTREATED TIMBER PILING	1204 Lin. Ft.
74	CONC. RAILG. FOR STRUCTURE	734 Lin. Ft.



For alterations to existing bridge
see Drawgs. 5705 to 5709 Inclusive Job No. 1148

LAYOUT
Scale: 1" = 1 MI.
GROSS LENGTH OF PROJECT 357'-6"
NET LENGTH OF PROJECT 357'-6"

APPROVED: _____
COMMISSIONER - STATE HIGHWAY AND IMPROVEMENTS

APPROVED: _____
STATE HIGHWAY ENGINEER

RECOMMENDED FOR APPROVAL: _____
DISTRICT ENGINEER - DISTRICT OF PUBLIC ROADS

RECOMMENDED FOR APPROVAL: _____
CHIEF ENGINEER - DISTRICT OF PUBLIC ROADS

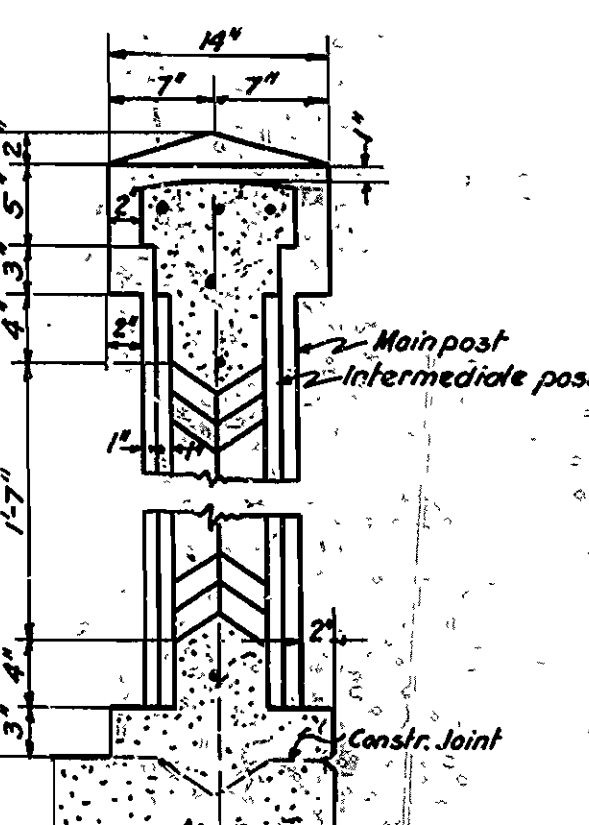
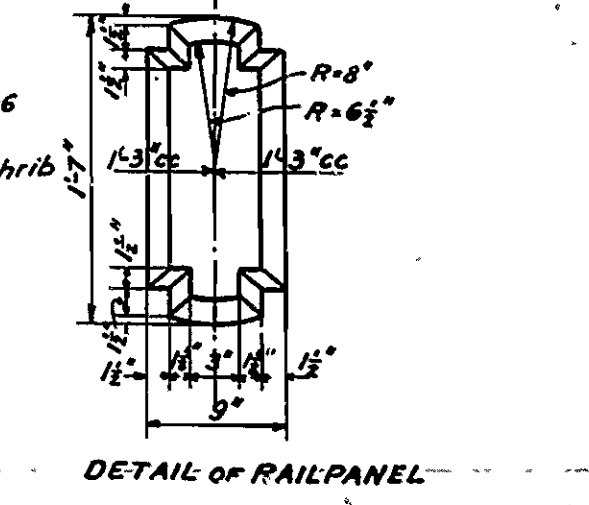
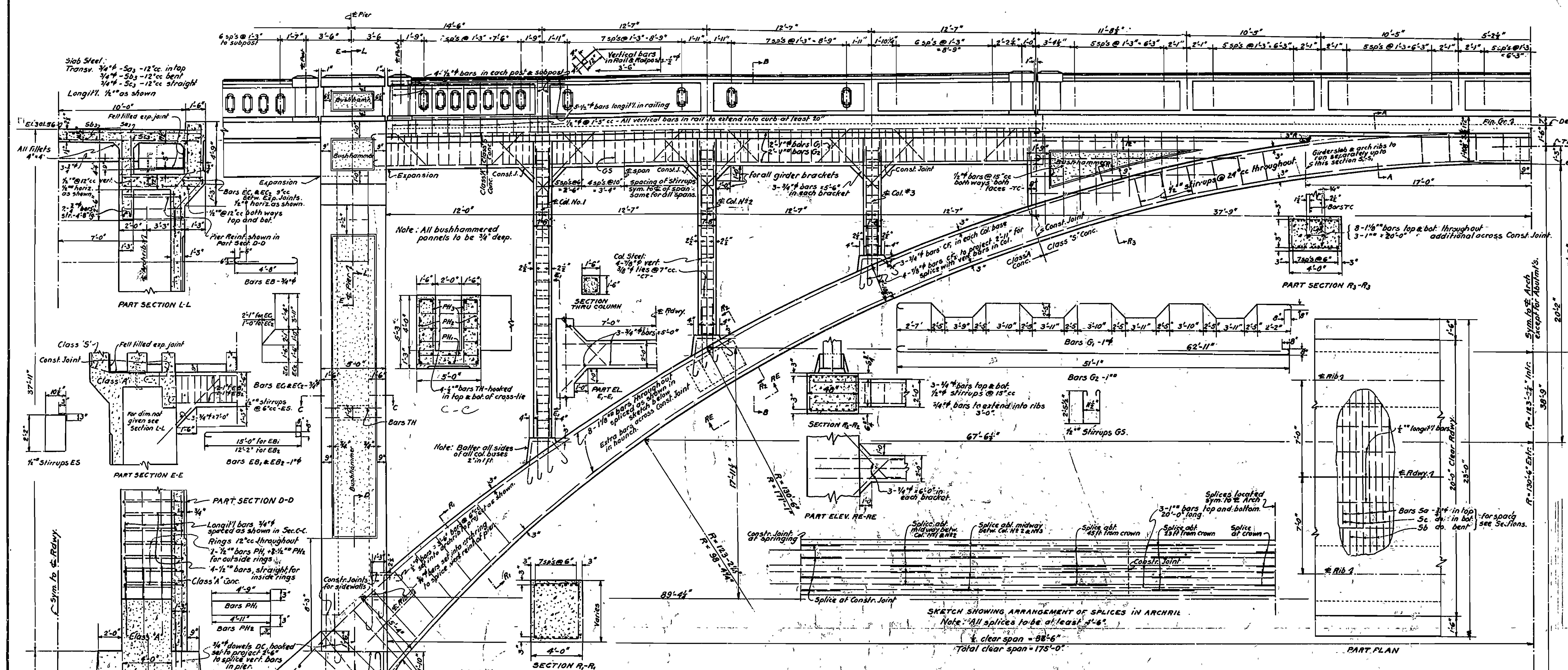
APPROVED: _____
DISTRICT ENGINEER - DISTRICT OF PUBLIC ROADS

M.B. Jones
BRIDGE ENGINEER

BRIDGE NO. 352

DRAWING NO. 777

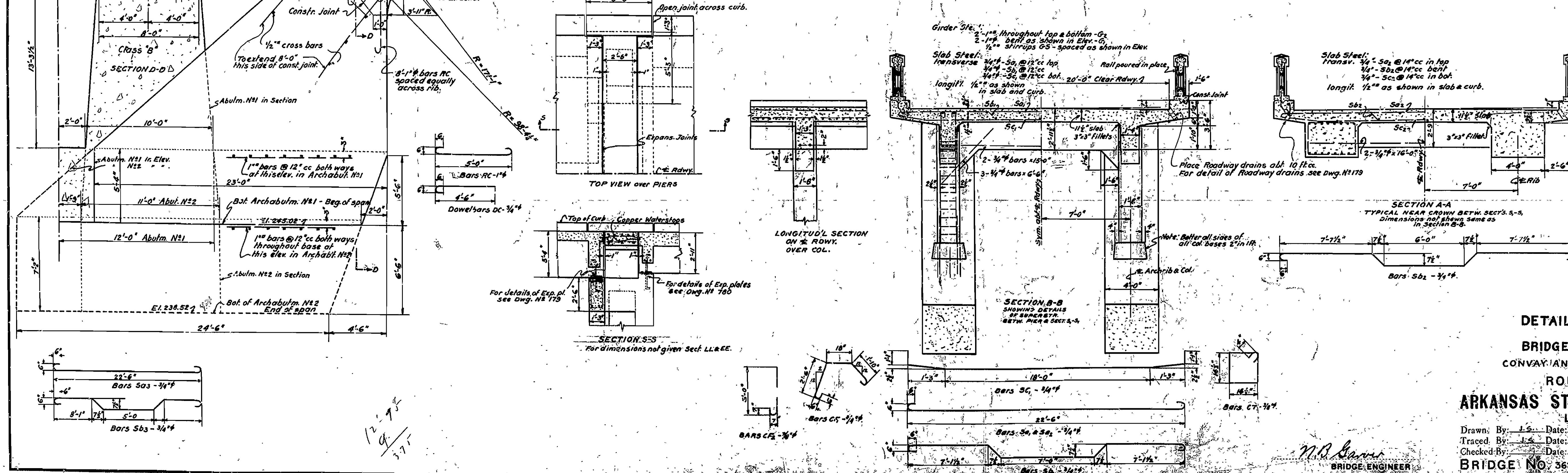
FISCAL YEAR	Job No	SHEET TOTAL
1928	1148	3 5
1148		8 11
DETAIL ARCH SPAN FOR CADRON CREEK BRIDGE		



SECTION THRU RAIL

Work Not Done 9/2/56

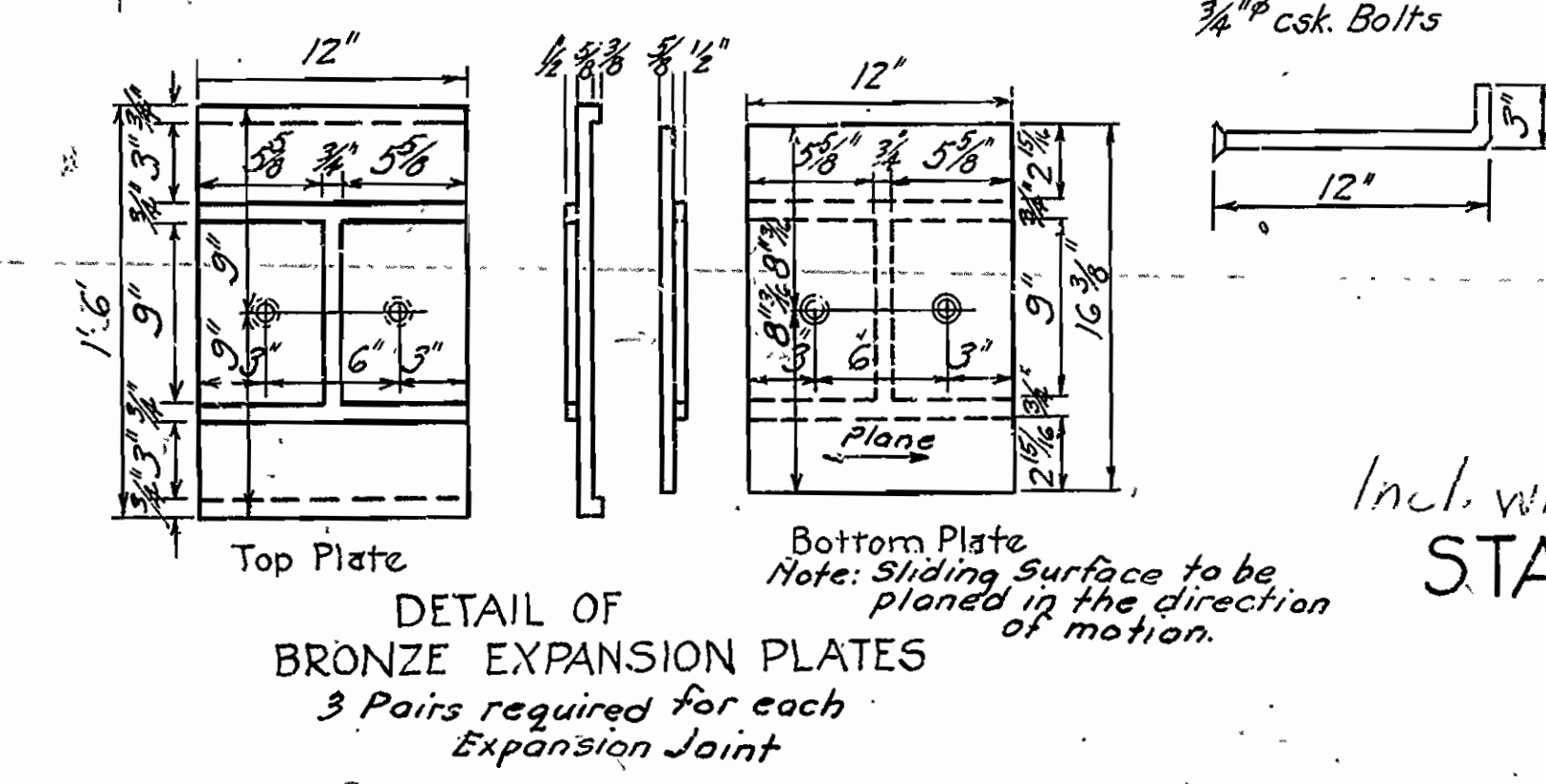
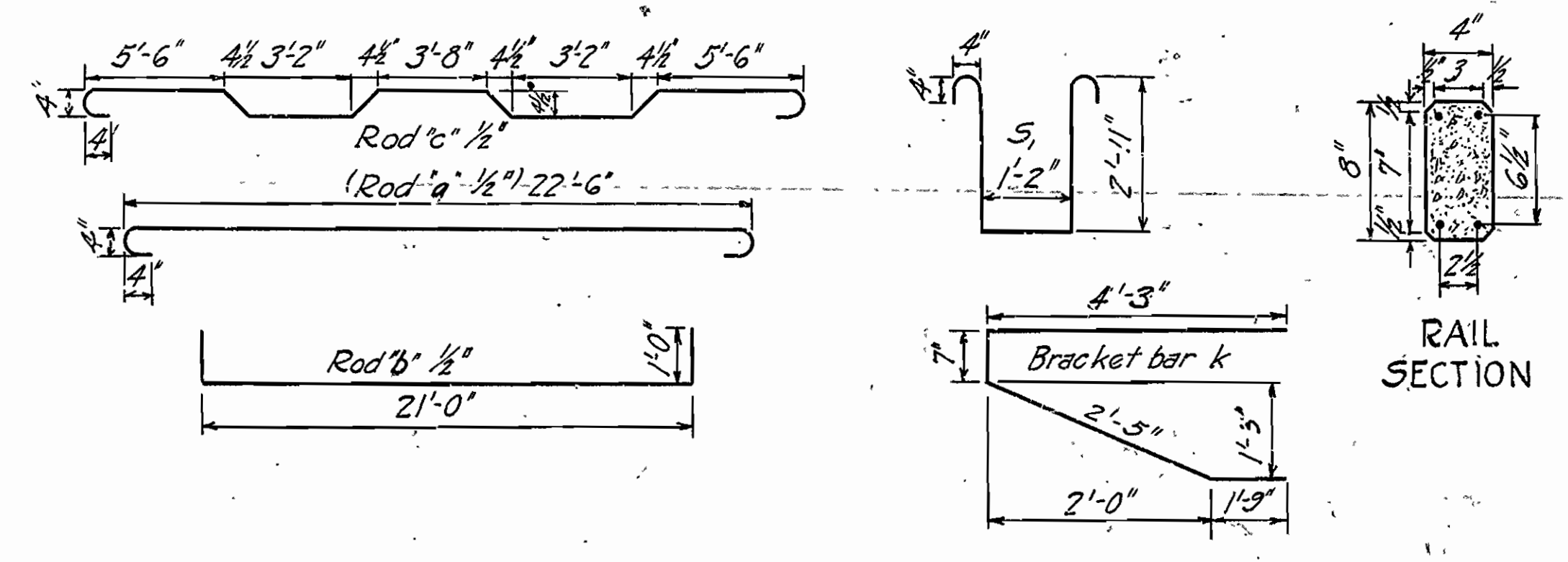
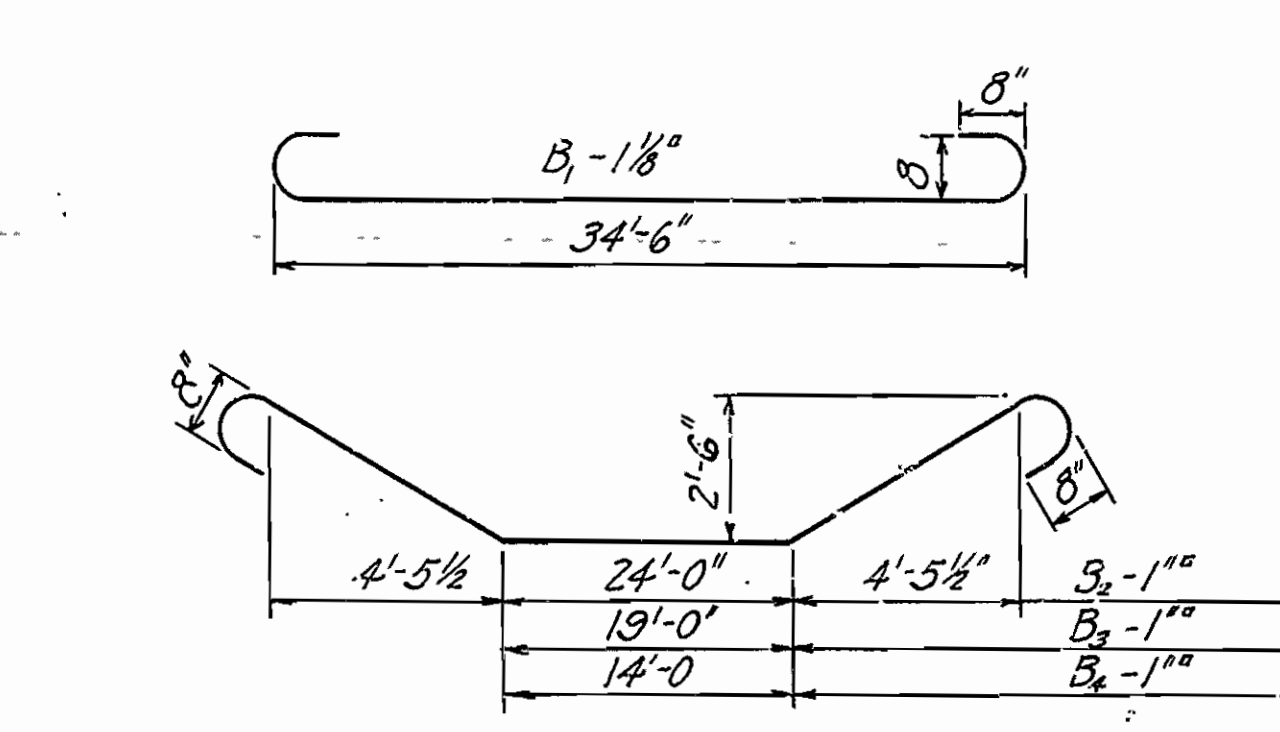
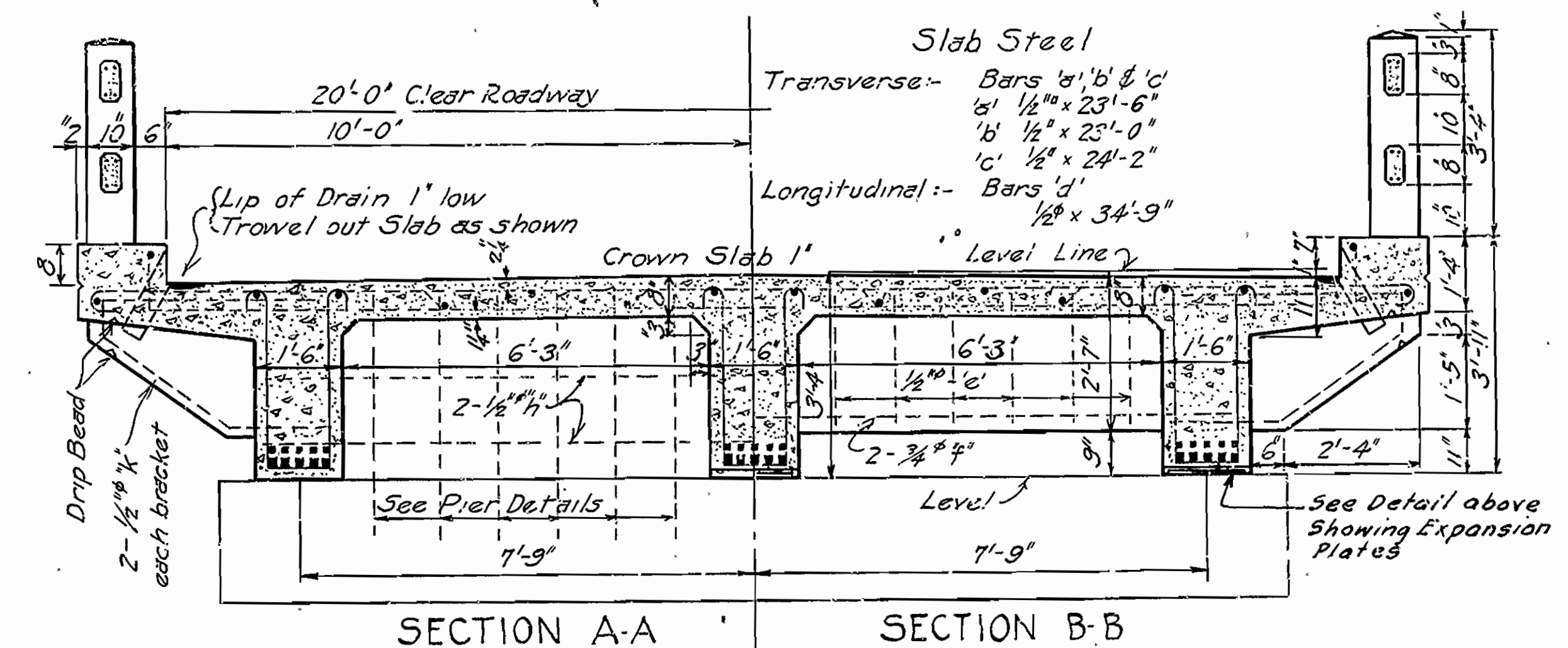
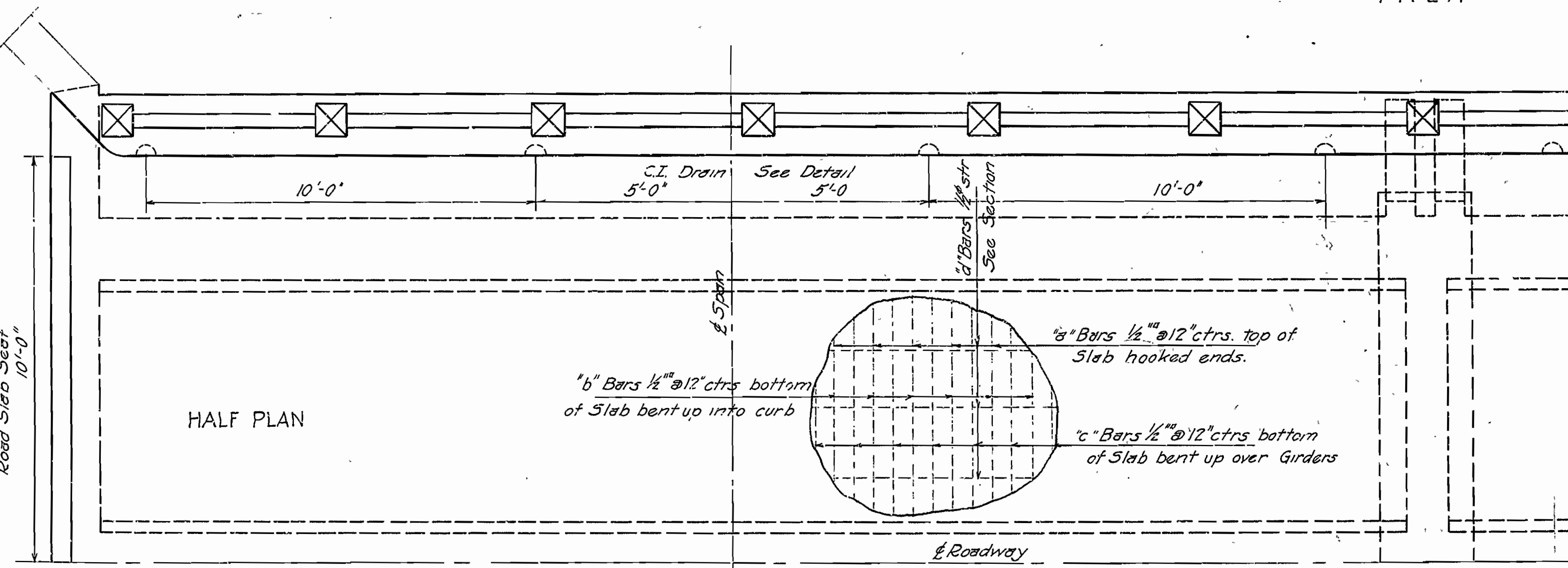
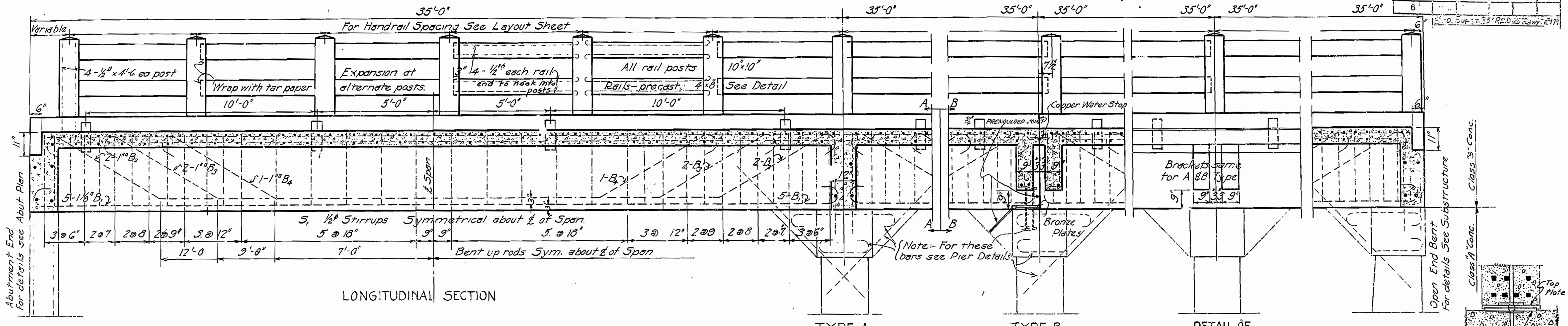
(For alterations to existing bridge see Drawgs. 5705 to 5709 Inclusive.)



DETAILS OF ARCHSPAN
FOR
BRIDGE OVER CADRON CREEK.
 CONVAY AND FAULKNER CO. NEAR GLEASON.
 ROUTE 64 SEC. 8
ARKANSAS STATE HIGHWAY DEPARTMENT
 LITTLE ROCK, ARK.
 Drawn By: J.S. Date: 3-11-28
 Traced By: J.S. Date: 3-28-28
 Checked By: J.S. Date: 7-1-28
 Scale: 1/4" = 1'-0"
BRIDGE No. 362
DRAWING No. 779

M.B. Sauer
BRIDGE ENGINEER

FED. ROAD DIST. NO.	STATE	TEE AID PROJ. NO.	SCALE	SHEET	TOTAL SHEETS
6				17	17



GENERAL NOTES

All exposed corners to have $\frac{3}{8}$ " chamfer unless otherwise noted.

Precast Concrete Handrails to be 1:3 Mix. Max Agg. 1/2"

Rail Posts to be Class 'S' Concrete.

Reinforcing Steel to be deformed bars of Structural or Intermediate Grade. Shop List and Bending Diagrams of Steel must be submitted before fabrication. Drains and Exp. Devices to be paid for at the unit price bid for Reinf. Steel.

All concrete above Top Column Cap except Handrail, Class 'S'; below, Class 'A'.

Specifications - Ark. Standard Road and Bridge Specifications adopted May 30 1925

Pour all concrete in the dry.

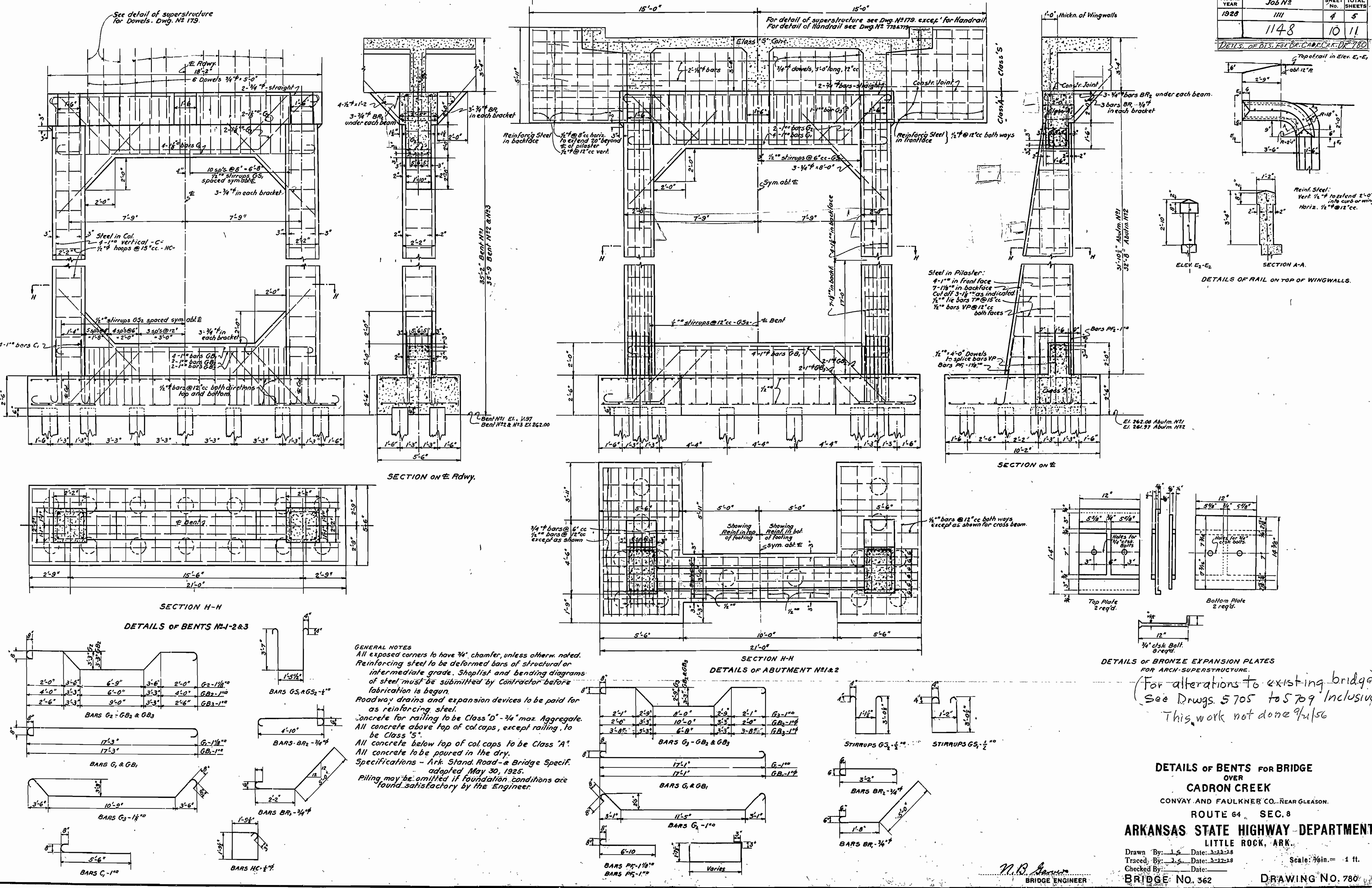
Incl. with Job 4372 for information on
STANDARD SUPERSTRUCTURE
 FOR
35 FT. R.C.D. GIRDER
 20 FT. ROADWAY
 ROUTE SEC.
ARKANSAS STATE HIGHWAY DEPARTMENT
 LITTLE ROCK, ARK.

Drawn By: C.A.P. Date: 1/15/25
 Traced By: C.A.C. Date: 1/15/25
 Checked By: _____ Date: _____

Scale: 1/2" = 1' ft.
 BRIDGE NO. _____ DRAWING NO. 179

M.B. James
 BRIDGE ENGINEER

FISCAL YEAR	JOB NO	SHEET NO	TOTAL SHEETS
1928	1148	4	5
DETS. OF B.S. FOR BR. CADRON CR. DR. 780		10	11



(For alterations to existing bridge)
 See Drawgs. 5705 to 5709 Inclusive
 This work not done 9/15/36

N.B. Jones
 BRIDGE ENGINEER